

Product Data



Blaze 1

Recommended Uses

Blaze 1 is a seed film coating polymer designed for seed colouring and binding of treatments to seed, requiring low binding of solids.

Features & Benefits

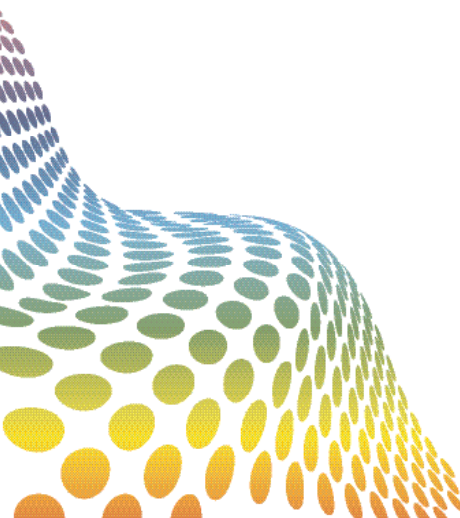
- High opacity
- Low binding capacity
- Sparkle has an obvious metallic look to the finish
- Concentrated formulation for ease of handling

Through its unique formulation it can be used on a wide range of seed types.



Use	Coating Type			Properties					
	Film	Encrust	Pellet	Binding Capacity	Opacity	Finish	Flow Rating	Dust Control	Colour(s)
Finishing	Yes	Yes*	Yes*	Low - Medium	Med - High	Sparkle, Bright	---	Low	R,G,B,Y,O,V

* when suitably diluted or as a final coating.



Blaze 1



Physical Properties

pH range	6 – 7
Viscosity	900 - 1200
Density	1.1 - 1.3
Viscosity Comment	@120 RPM, RV04

Characteristics

EPA40CFR180 compliant	Yes, in certain colours
Storage Temperature	5 – 30°C
Storage Instructions	Closed container, out of direct sunlight, protect from freezing
Shelf Life	12 months when stored correctly

Application Guide

Blaze 1 should be stirred before use as some settling may occur during transport and storage. For most applications Blaze 1 should be diluted with water before use. Typical slurry application rates are shown in the table below.

Seed Type	Economy Rates			Medium Rates			Quality Rates		
	Blaze 1	Water	Total	Blaze 1	Water	Total	Blaze 1	Water	Total
Beans	12	2	14	15	0	15	17.5	0	17.5
Canola	10	18	28	15	15	30	20	10	30
Carrot	30	40	70	40	40	80	50	50	100
Cereals	2	24	26	8	20	28	16	16	32
Onion	30	20	50	40	20	60	60	5	65
Millet	2	8	10	3	6	9	5	5	10
Maize	2.5	7.5	10	5	10	15	10	10	20
Sorghum	1.5	7.5	9	3	6	9	5	10	15
Soya	3	4	7	5	3	8	8	2	10
Sunflower	10	10	20	20	20	40	30	15	45

Rates are expressed in grams of product applied per kg of seed

and any mixes should be tested before any large scale application. Once a seed is used on the same day. Storage of mixtures is not recommended.

